

## Vaginal Status (Aromatogram)

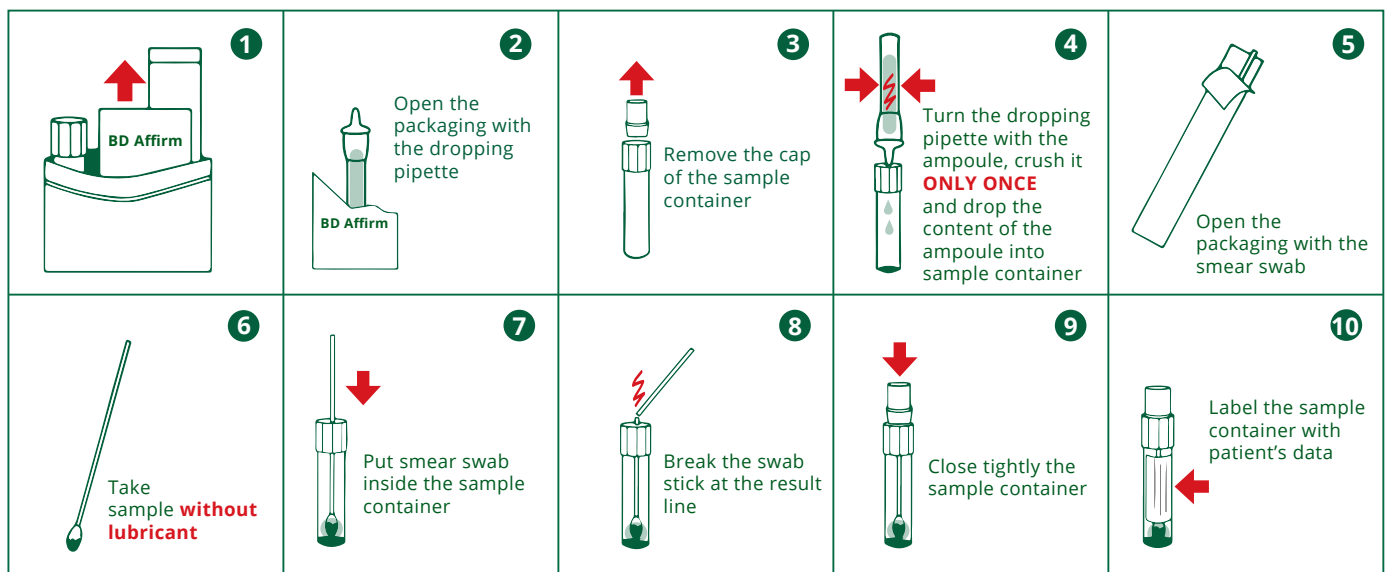


### Test Instructions

#### Test Set includes:

- 1 x Request Form
- 1 x Test Instructions
- 1 x pH-Measurement
- 2 x Smear Tube
- 1 x Smear Affirm
- 1 x Shipping Envelope / Return Envelope

#### Instructions:



#### Please do not carry out during menstruation or after intercourse!

Moisten the three smear swabs with the vaginal secretions for about 10 sec. (Cave: avoid contamination by surrounding germs !!!), place them in the shipping media and close them.

After taking the sample, determine the vaginal pH value and enter it in the request form.

#### Please be sure to label sample container with:

- Name
- Date

#### Please do not refrigerate samples, but store at room temperature.

Please place the three labeled smear tubes inside the shipping envelope together with the completed request form and bring them to the post office as soon as possible.

## Vaginal Status (Aromatogram)

### SAMPLE TAKING, STORAGE AND TRANSPORT

#### Sample Taking

**Sample Taking is a critical step.** The staff taking vaginal secretions samples should be well trained to minimize the possibility of contaminated samples. For sample taking use only the **Affirm** VPIII Room Temperature Transport System, the **Affirm** VPIII Sampling Set or the swabs supplied with the microbiological Identification Test Kit Affirm VPIII. **For other tests, eg. slide cultures, separate swabs should be used.**

#### Vaginal Secretion Sample Taking

1. Label the sample container (SCT) with patient's / laboratory identification data. Please also record time of sample taking
2. Have the patient take the position for pelvic examination. Insert a speculum into the vagina to visualize the posterior vaginal vault. \*
3. Make a smear of the posterior vaginal vault using the sterile swab with polyester tip. Roll or twist the swab along the vaginal wall two to three times, ensuring that the entire circumference of the swab engages the vaginal wall. Dab the lateral vaginal wall while pulling out the swab out.
4. Immediately insert the swab into the sample container (SCT).
5. Hold the pre-grooved swab just above the tube opening, with the swab touching the bottom of the sample container, and bend the swab until it breaks off. When the swab is fully inserted into the sample container, the swab groove is approximately 1 cm above the tube opening. Dispose of the broken handle in a container for infectious waste.
6. Place the cap of the sample container on the protruding end of the swab and press firmly. The cap snaps into place when firmly seated.

*\* In clinical trials, study sites were instructed to use specula without lubricant. Please read the section "Interfering substances".*

#### Sample Taking and Transport

If you are using the Affirm VPIII Room Temperature Transport System (ATTS):

The total time between sample taking and beginning of sample preparation should not exceed 72 hours if the sample is stored at room temperature (15 - 30 ° C). The system is also suitable for refrigerated transport (2 - 8 ° C).

If you use either the Affirm VPIII Sampling Set or the swabs that are included in the microbiological Identification Test Kit Affirm VPIII: The total time between the time you place the sample in the sample container and the start of sample preparation should not be longer than 1 h if the sample is stored at room temperature or 4 h if the sample is stored at 2-8 ° C.